

TEXTILE

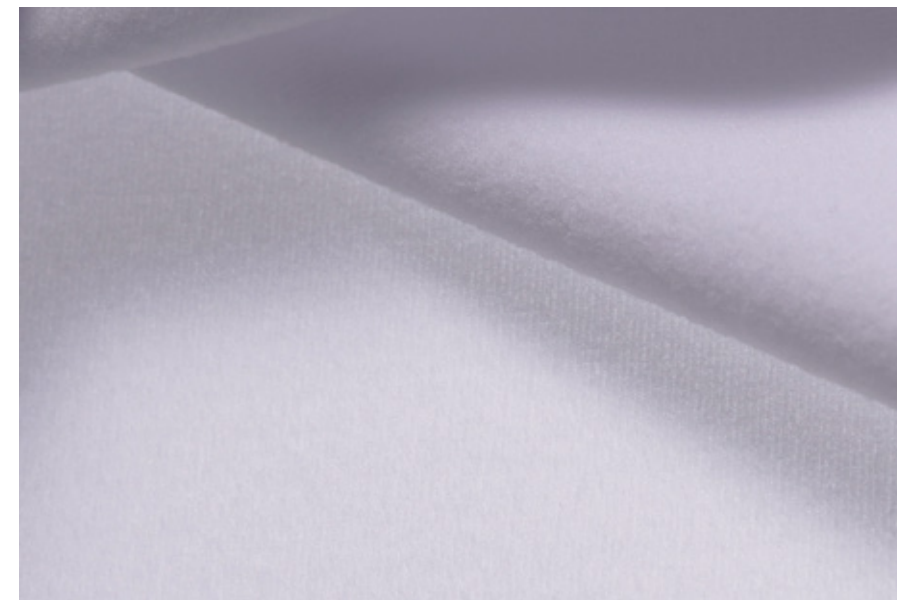
BLIZZARD

THERMAL COMFORT



ART. BLIZZARD PLX STONE

FABRIC TYPE	Back side brushed Warp Knit Prepared For Print (PFP)
COMPOSITION	PL 84% - EA 16%
H/cm	155 cm (min 152 cm - max 158 cm)
g/m²	240 g (min 228 g - max 252 g)
APPLICATION	Thermal Activewear
END USE	Customized Outer Layer / Customized Tights & Leggings



SITIP LABELS



APPLIED TECHNOLOGIES



SUITABLE END USE



CERTIFICATES



FUNCTIONS



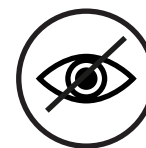
4 way-stretch



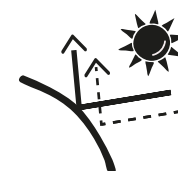
Comfort stretch



Skin-comfort



No-see-through effect



UPF 50+



Printable



Thermal