

NATIVE-TROPHY

PLR 91% - EA 9%
130 g/m2 - 160 cm

Valori di Solidità Colori / Colour Fastness Data Values

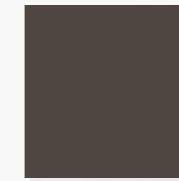
Colore / Colour	N°	Luce / Light ISO 105 B02		Sfregamento / Crocking Secco / Dry Umido / Wet ISO 105 X12		Lavaggio 40° - A1S / Washing 40° - A1S ISO 105 C06			Acqua Severa / Water Staining ISO 105 E01			Sudore Acido / Acid perspiration ISO 105 E04			Sudore Basico / Alkaline perspiration ISO 105 E04		
		C.C.	S.CO	S.CO	S.PL	S.PA	S.CO	S.PL	S.PA	S.CO	S.PL	S.PA	S.CO	S.PL	S.PA	S.CO	
ARROW	X034	2	4/5	4	4/5	4/5	4/5	4/5	4/5	4	4/5	4/5	4/5	4	4/5	4/5	
CLOUD	C103	3/4	4/5	4/5	4/5	4/5	4/5	4/5	4/5	4/5	4/5	4/5	4/5	4/5	4/5	4/5	
BIANCO	528	3/4															
GOBI	S248	5	4/5	4	4/5	4	4/5	4/5	4/5	4	4/5	4/5	4	4/5	4/5	4/5	
GRAVEL	S368	3/4	4/5	4/5	4/5	4/5	4/5	4/5	4/5	4	4/5	4/5	4/5	4	4/5	4/5	
HOLLY	M111	3/4	4/5	4/5	4/5	4/5	4/5	4/5	4/5	4/5	4/5	4/5	4/5	4/5	4/5	4/5	
NERO	X054	4/5	4	4	4/5	4/5	4/5	4/5	4/5	4	4/5	4/5	4/5	4/5	4/5	4/5	
PEWTER	S367	3/4*	4/5	4/5	4/5	4/5	4/5	4/5	4/5	4/5	4/5	4/5	4/5	4/5	4/5	4/5	
PINK LADY	C105	4	4/5	4	4/5	4/5	4/5	4/5	4/5	4	4/5	4/5	4/5	4	4/5	4/5	
SHOWER	C104	5	4/5	4/5	4/5	4/5	4/5	4/5	4/5	4/5	4/5	4/5	4/5	4/5	4/5	4/5	
VODKA	M162	4/4	4	4	4/5	3	4/5	4	4	4/5	4/5	4	4	4/5	4	4/5	
YOHEI	X147	3/4	4/5	4/5	4/5	4/5	4/5	4/5	4/5	4/5	4/5	4/5	4/5	4/5	4/5	4/5	

Luce / Light	Valutazioni / Assessments	Altri Test / Other Tests	Valutazioni / Assessments
1	Debolissima / Very weak	1	Debole / Weak
2	Debole / Weak	2	Scarsa / Limited
3	Moderata / Moderate	3	Abbastanza buona / Fair
4	Abbastanza buona / Fair	4	Buona / Good
5	Buona / Good	5	Ottima / Excellent
6	Buonissima / Very good		
7	Ottima / Excellent	# Colori Fluorescenti / Fluor Colours	
8	Eccezionale / Exceptional	C.C. = Cambio Colore / Colour discoloration S.CO = Stringimento su Cotone / Staining on Cotton S.PA = Stringimento su Poliammide / Staining on Polyamide	

Raccomandiamo la massima attenzione nella lettura dei valori di solidità. Sconsigliamo abbinamenti/intarsi tra colori che abbiano valori di solidità al lavaggio o acqua inferiori a 4/5. In caso di necessità di abbinamento/intarsio consigliamo sempre una prova preventiva.

Please pay special attention to the fastness values declared on the colour card. Combination of colours is not recommended when the fastness values of washing or water are lower than 4/5. In case of combination we suggest a trial before.

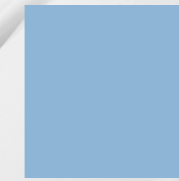
Agg. 08 - Date 02.04.2024



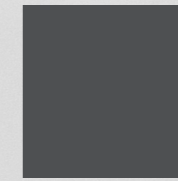
X034
ARROW



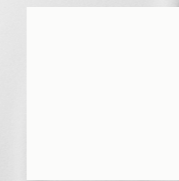
X054
NERO



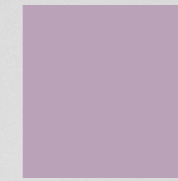
C103
CLOUD



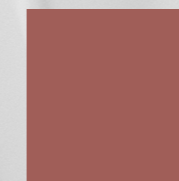
S367
PEWTER



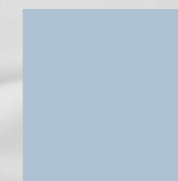
528
BIANCO



C105
PINK LADY



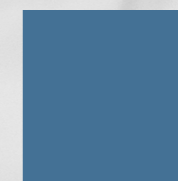
S248
GOBI



C104
SHOWER



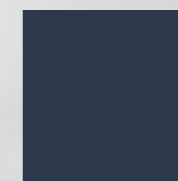
S368
GRAVEL



M162
VODKA



M111
HOLLY



X147
YOHEI

